

Configure Your AKClaw on the Akuvox X937

Akuvox X937 indoor monitor supports AI agent integration through AKClaw, enabling AI-based device control and chat interaction. Once configured, you can send commands through messaging apps, and the AKClaw AI agent will act on your behalf directly on the device.

With this feature, you can:

- Control devices through natural language.
- Integrate with third-party chat platforms.
- Execute automation skills.
- Manage AI models directly on the device.

This guide explains how to configure the AI model and integrate chat platforms.

Compatible model and version(or higher)

X937: 937.30.1014.810

Before You Start

- Ensure the device firmware supports AKClaw.
- Prepare AI provider API key.
- Ensure device internet access.
- Ensure the firewall allows outbound connections.
- Required chat platform accounts are prepared (if integration is needed).
- Your phone and the X937 must be connected to the same local network (Wi-Fi or LAN) before scanning the QR code.

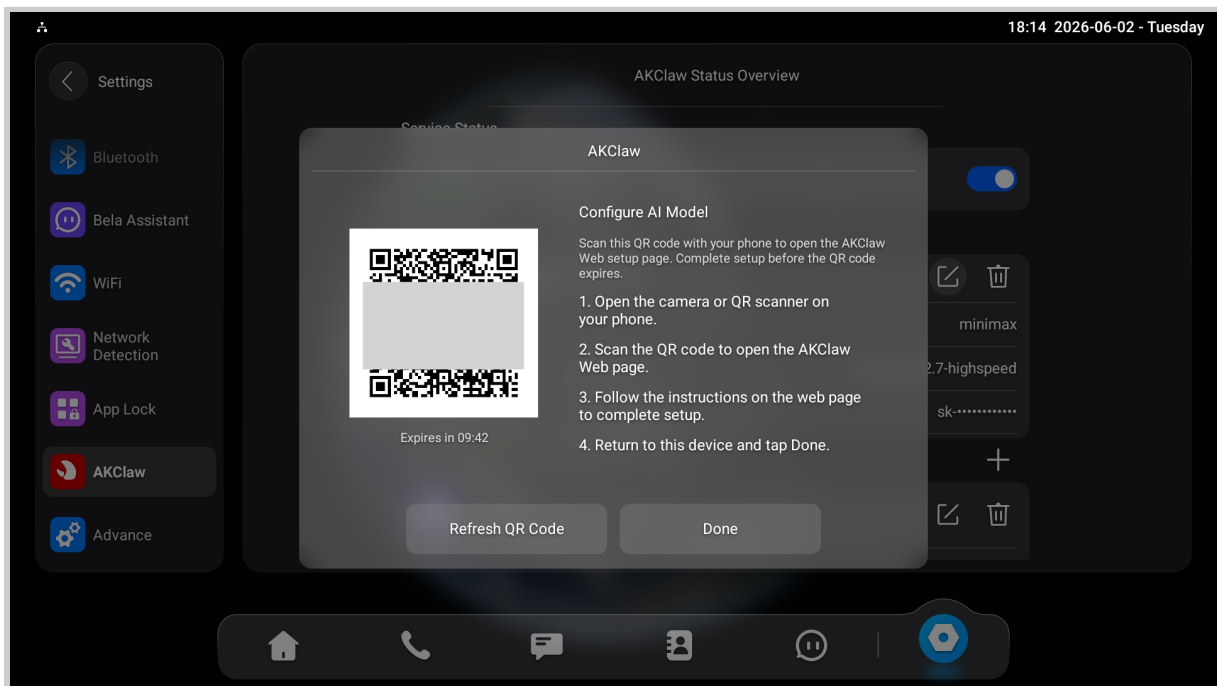
Add an AI Model

This section connects AKClaw to an AI provider. AKClaw uses this model to understand your natural language commands.

1. Tap **Settings > AKClaw**.
2. Enable **AKClaw Core** and add an **AI Model**.
3. Scan the QR code with your phone to open the AKClaw web page.

Note

The QR code expires after approximately 10 minutes. If it expires before you finish, tap **Refresh QR Code** on the device and scan again.



4. Select the **Provider** and enter the **API Key**.
5. Select the **Model**.
6. Tap **Save and Sync to Device**. "Config Submitted" will display on the indoor monitor.

6:19

Indoor Monitor

AKClaw Setup

Configure AI Model

⚠ Valid until 08:31. If expired, refresh the QR code on the device and scan again.

Provider

Provider

API Key

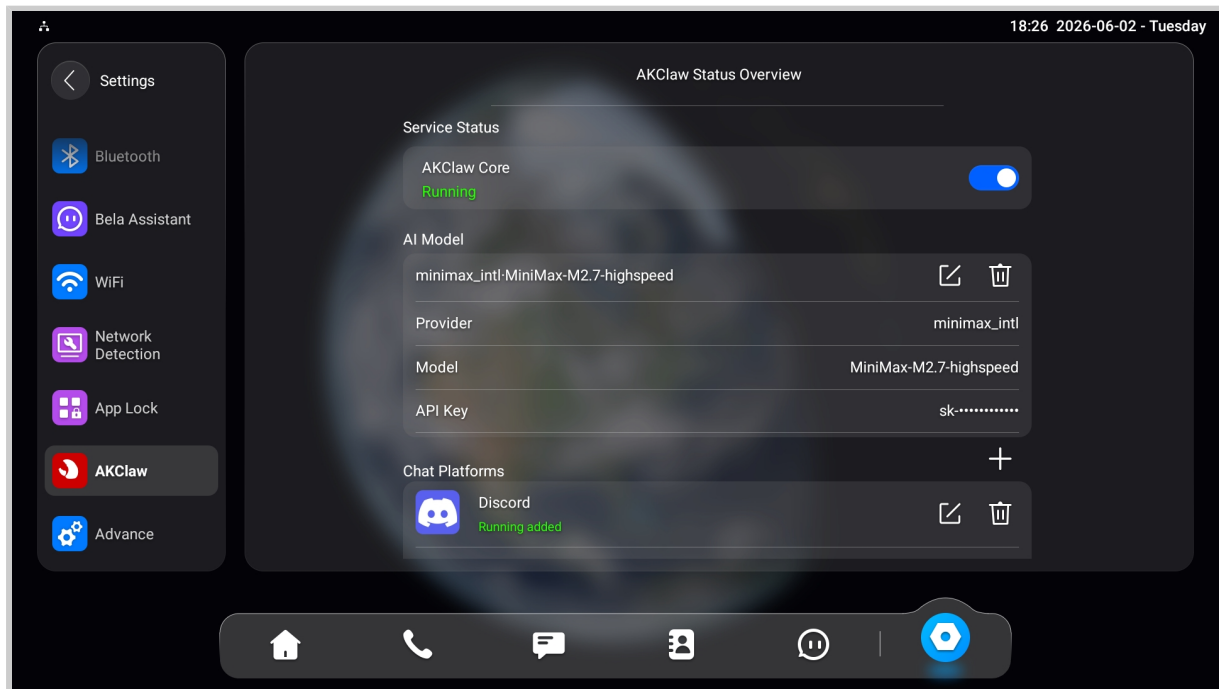
API Key

Model

Model

Save and Sync to Device

Then, wait for the **AKClaw Core** status to turn to **Running**.



Add Chat Platforms

Once AKClaw Core is running, you can link one or more chat platforms. Each platform can only be added once. The following platforms are supported: Telegram, WhatsApp, Discord, DingTalk, Feishu, WeCom, and Weixin.

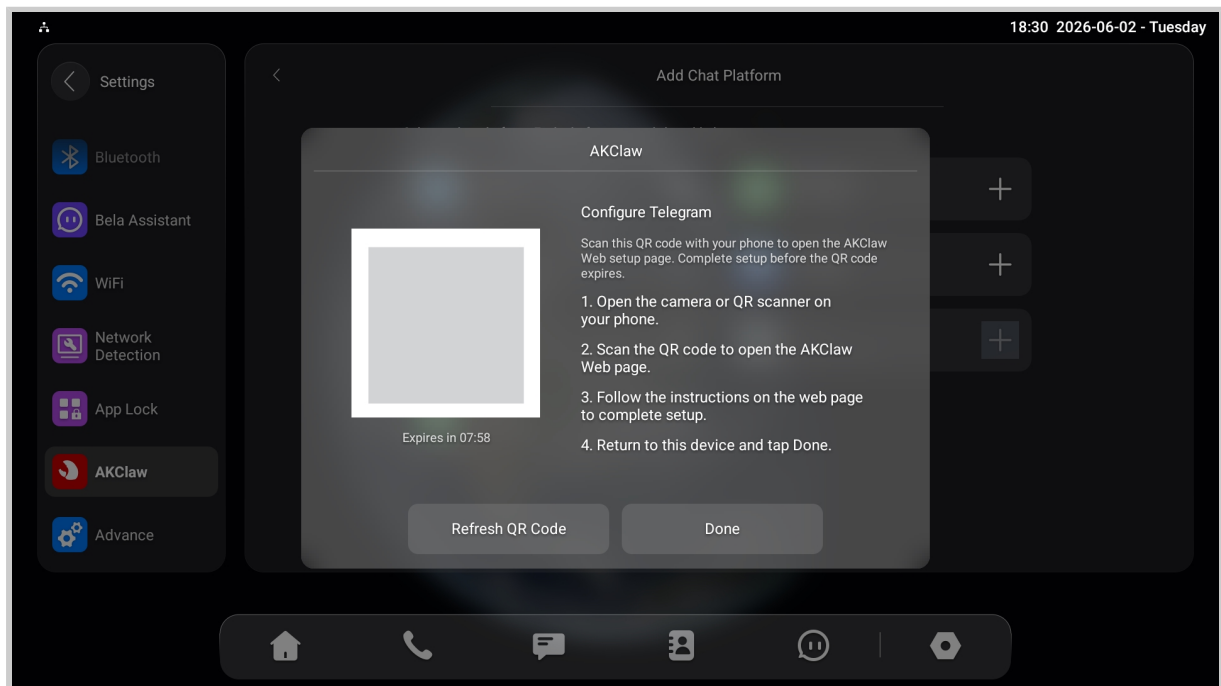
1. Tap **+** to add chat platforms on the **AKClaw** screen.
2. Tap **+** next to the desired chat platform and follow the steps below.



Telegram

Telegram setup uses a bot token that is automatically retrieved.

1. Tap + next to Telegram.
2. Scan the QR code with your phone.



3. The **Bot Token** and **Allow From** are filled in automatically. Simply tap **Save and Sync to Device**.
“Config Submitted” will display on the indoor monitor.

6:29

Indoor Monitor

Configure Telegram

Channel Selected on device

Valid until 09:02. If expired, refresh the QR code on the device and scan again.

Bot Token

123456789:ABCdefGHIjklMNOpqrsTUVwxyz

Enter your Telegram bot token

Allow From

USER_ID_1, USER_ID_2

Telegram user IDs allowed to send direct messages to the bot. Separate multiple IDs with commas.

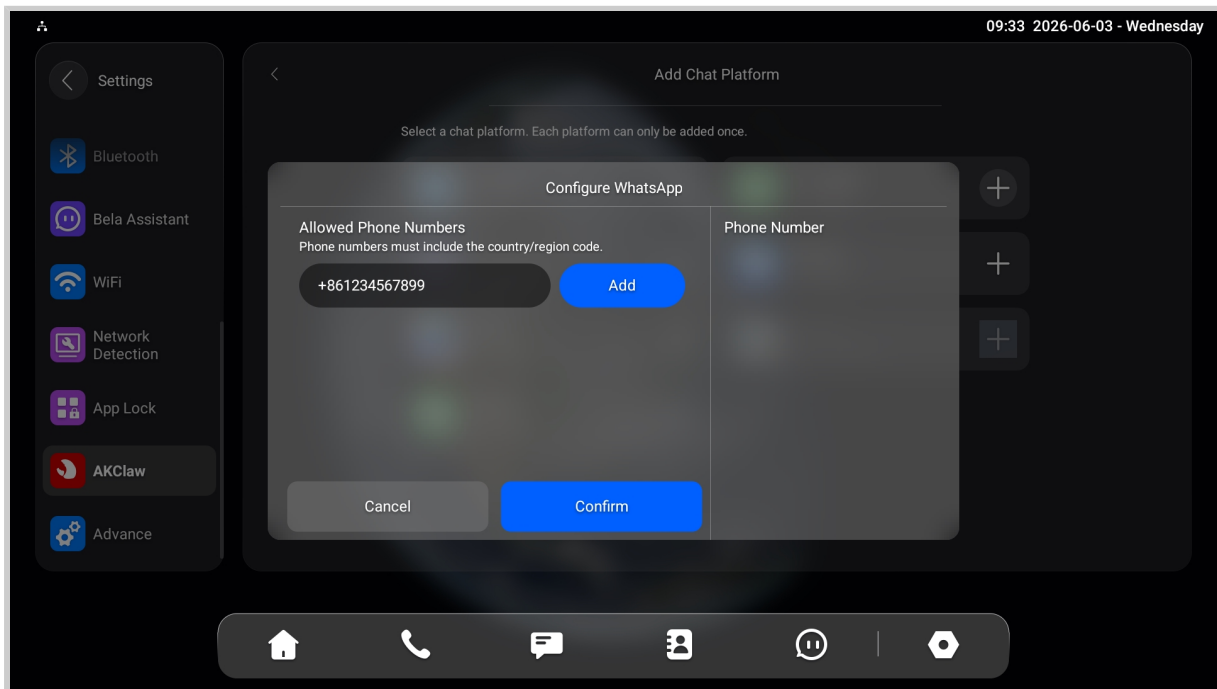
Save and Sync to Device

Note

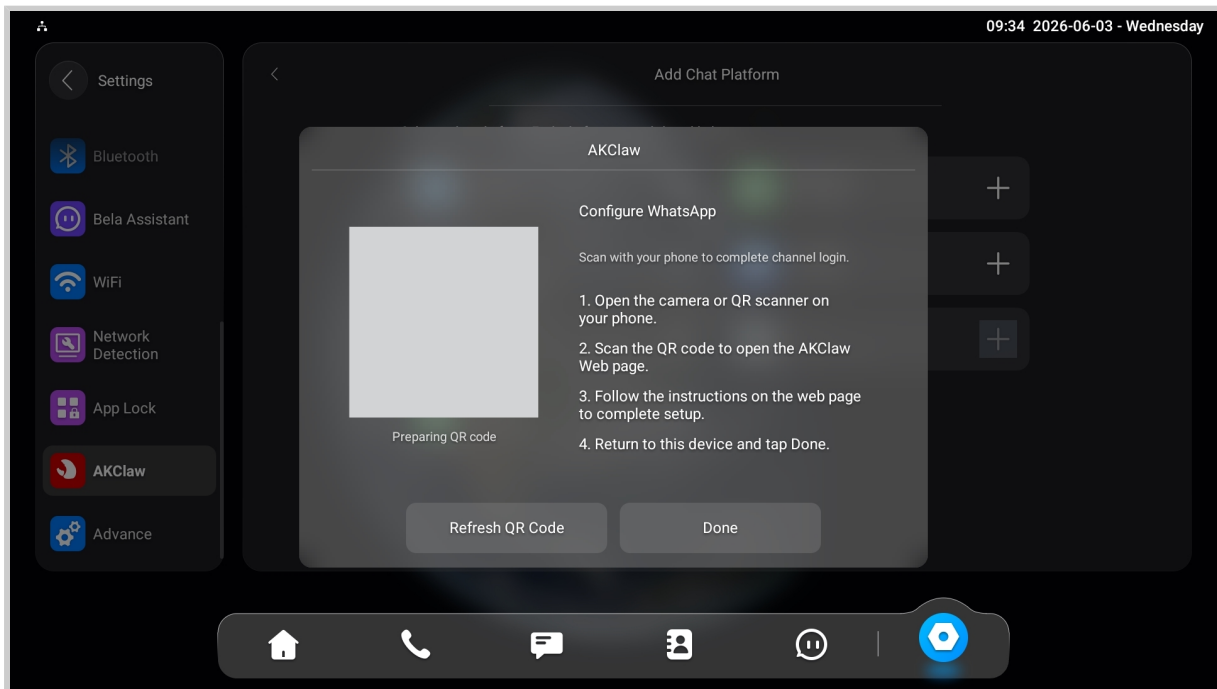
Allow From specifies which Telegram user IDs are permitted to send commands to the bot. To find your Telegram user ID, search for the bot @userinfobot in Telegram and send it any message. It will reply with your numeric user ID. Separate multiple IDs with commas.

WhatsApp

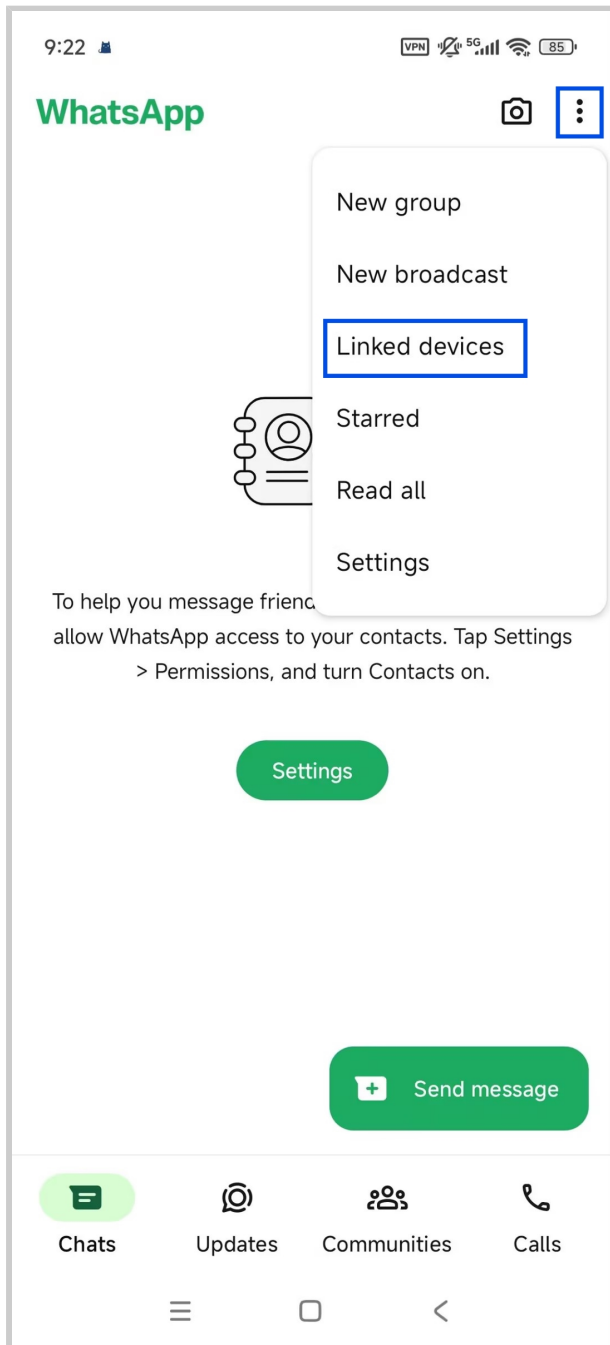
1. Tap **+** next to WhatsApp.
2. Enter your phone number in the format: **+{country code}{phone number}**, e.g., +861234567899.
3. Tap **Add** to add the phone number.

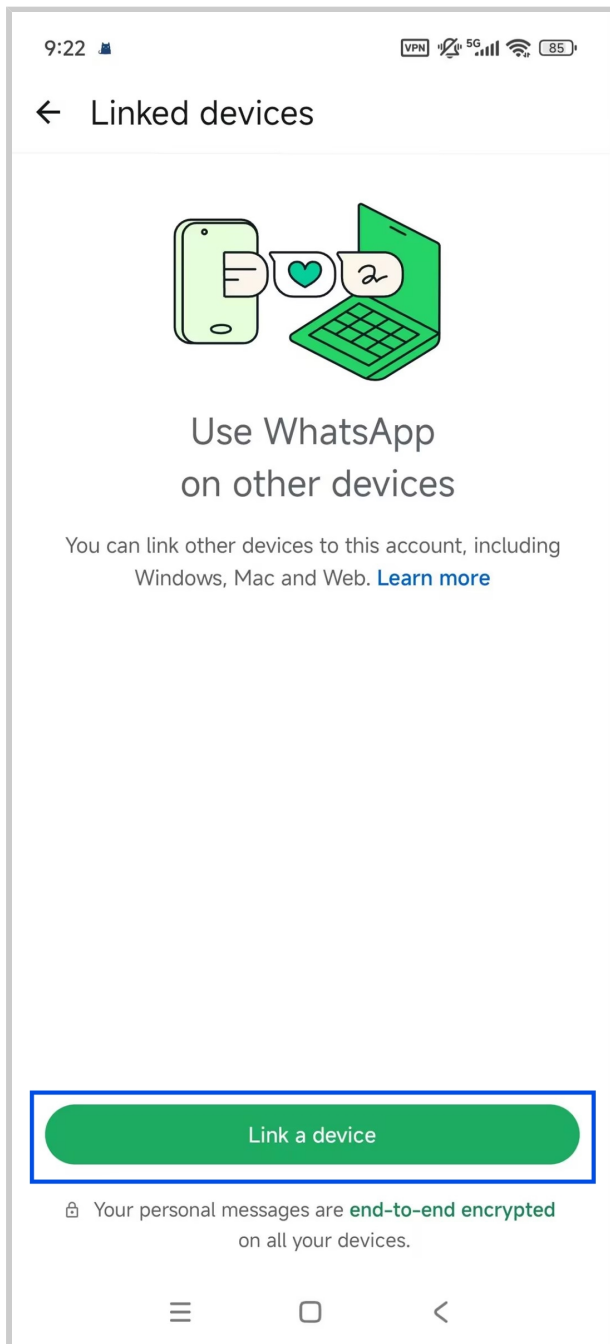


4. Tap **Confirm**. A QR code will appear on the device screen.



5. Open WhatsApp on your mobile phone.
6. Tap the menu icon in the upper-right corner and select **Linked devices**.
7. Tap **Link a device**.





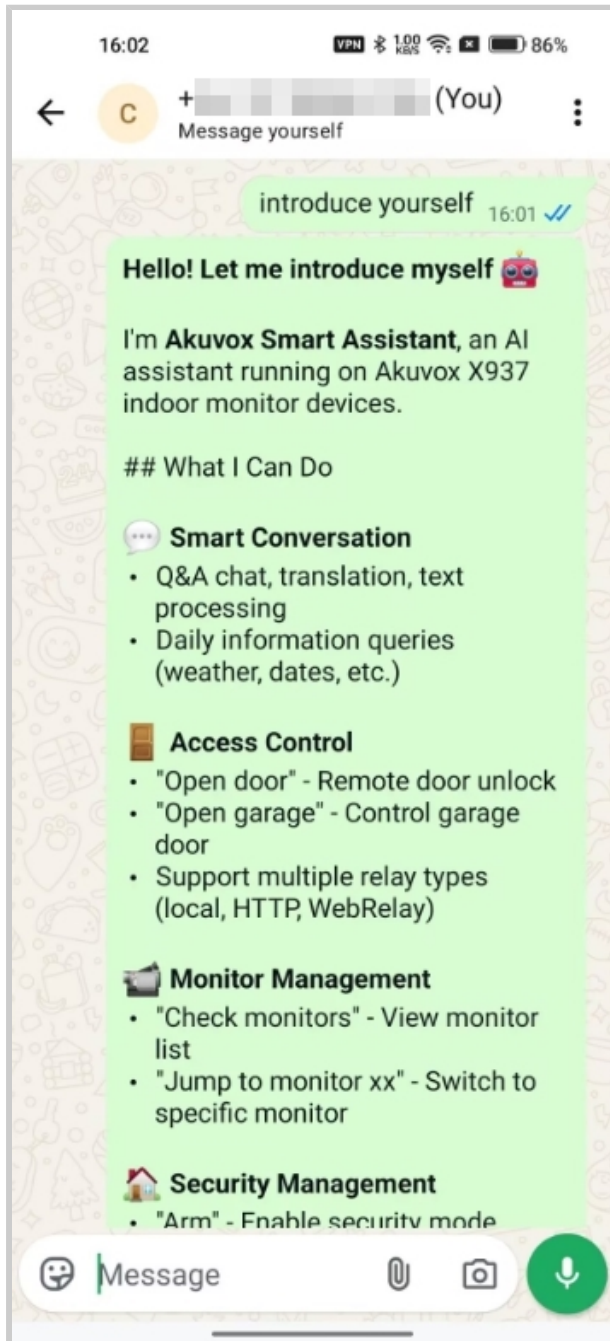
8. Scan the QR code on the indoor monitor.

Note

The WhatsApp account that scans the QR code will become the AKClaw bot account.

Then, wait about 1–2 minutes after the connection is established.

Send a message to your own WhatsApp account. The Bot will automatically reply to your message.

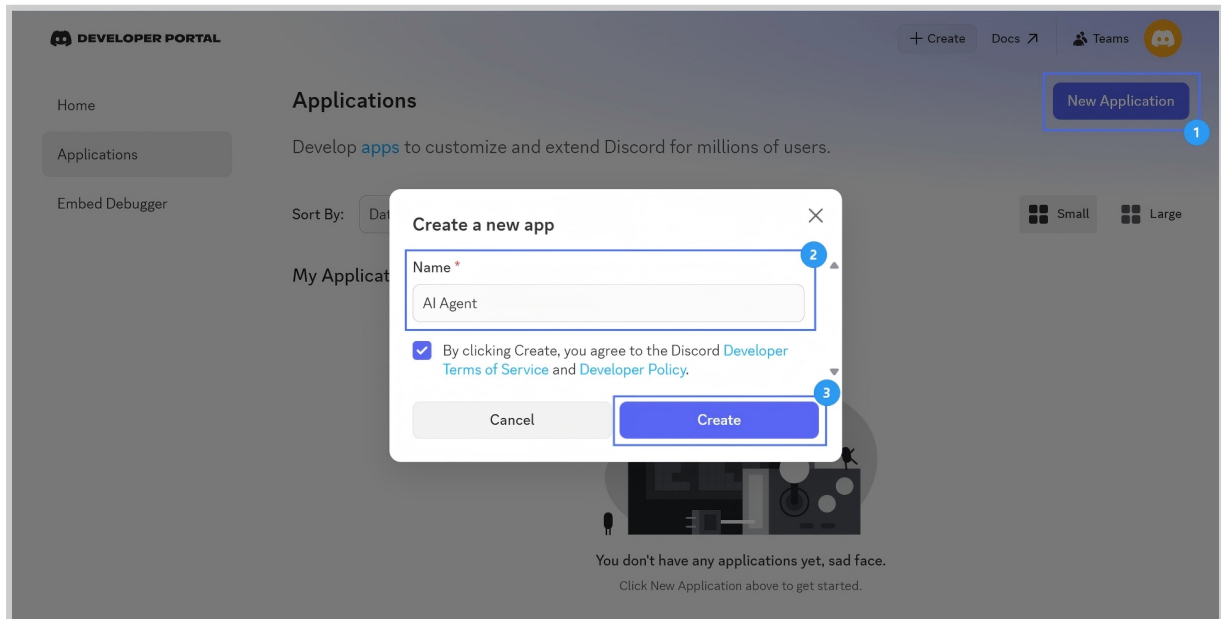


Discord

Discord setup requires creating a bot application in the Discord Developer Portal before configuring the device.

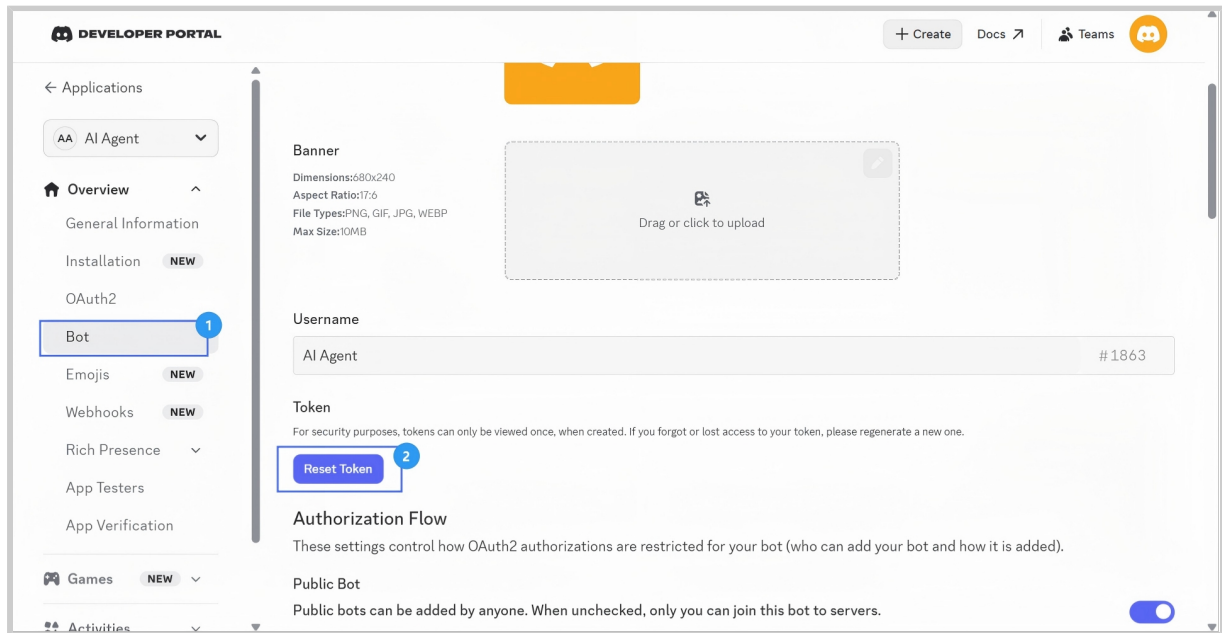
Create Discord Application

1. Open the [Discord website](#) and log in to your account.
2. Click **New Application**.
3. Customize the app name and click **Create**.

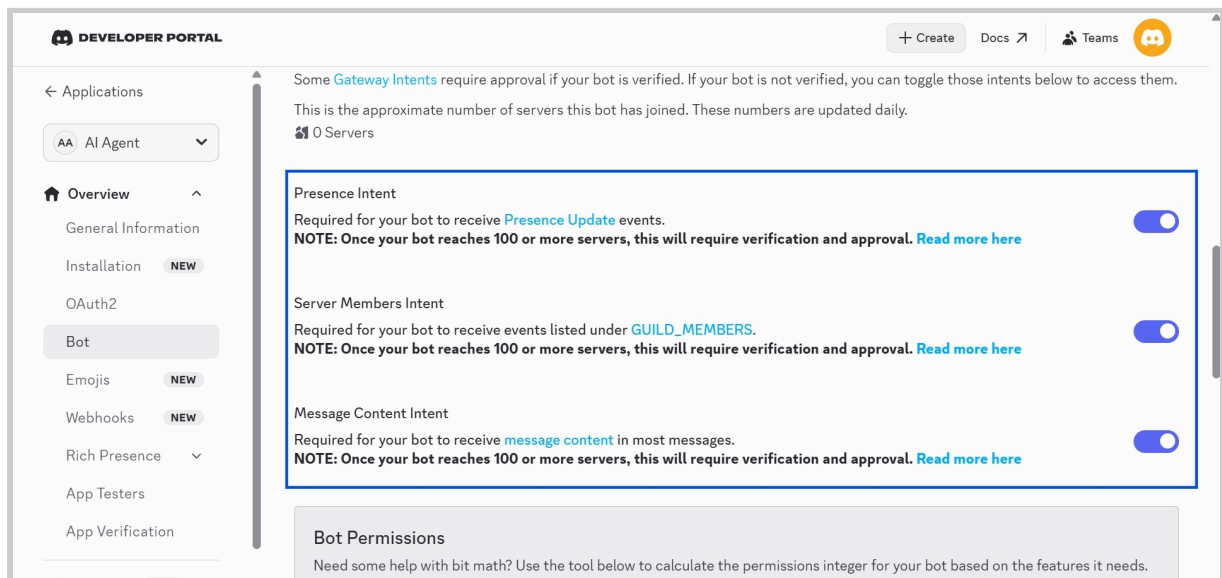


Generate Bot Token

4. Select **Bot** in the left **Overview** menu.
5. Click **Reset Token** to generate a new token.
6. Copy the new token for later use in the X937.



7. Enable Bot Intents as shown in the picture.

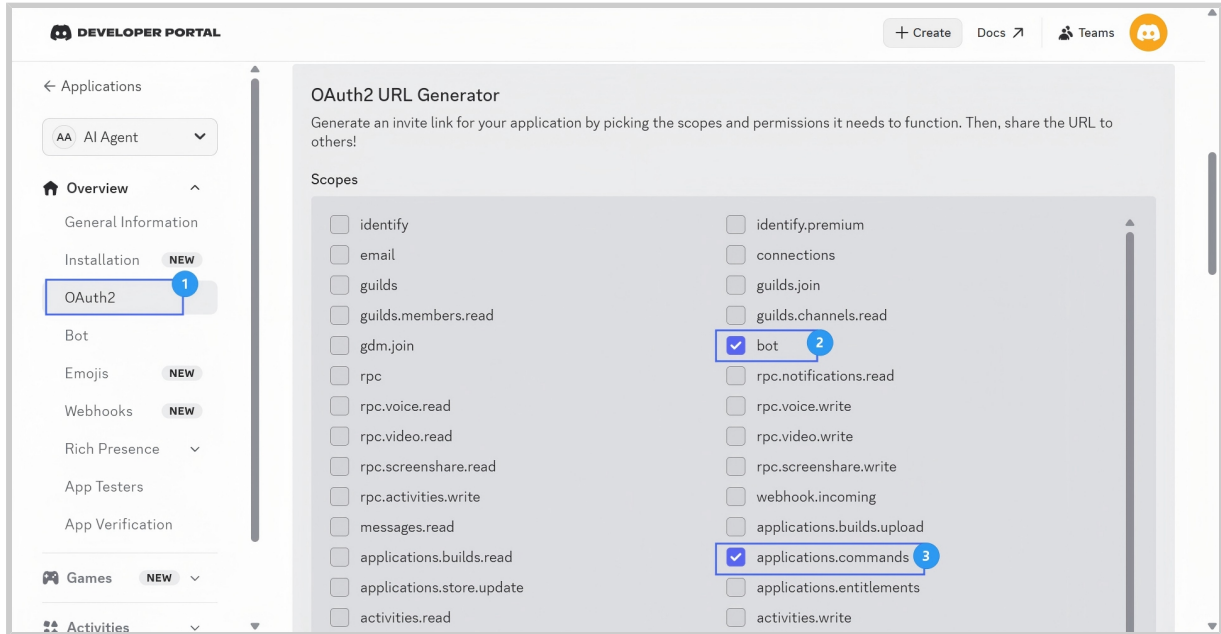


Configure OAuth

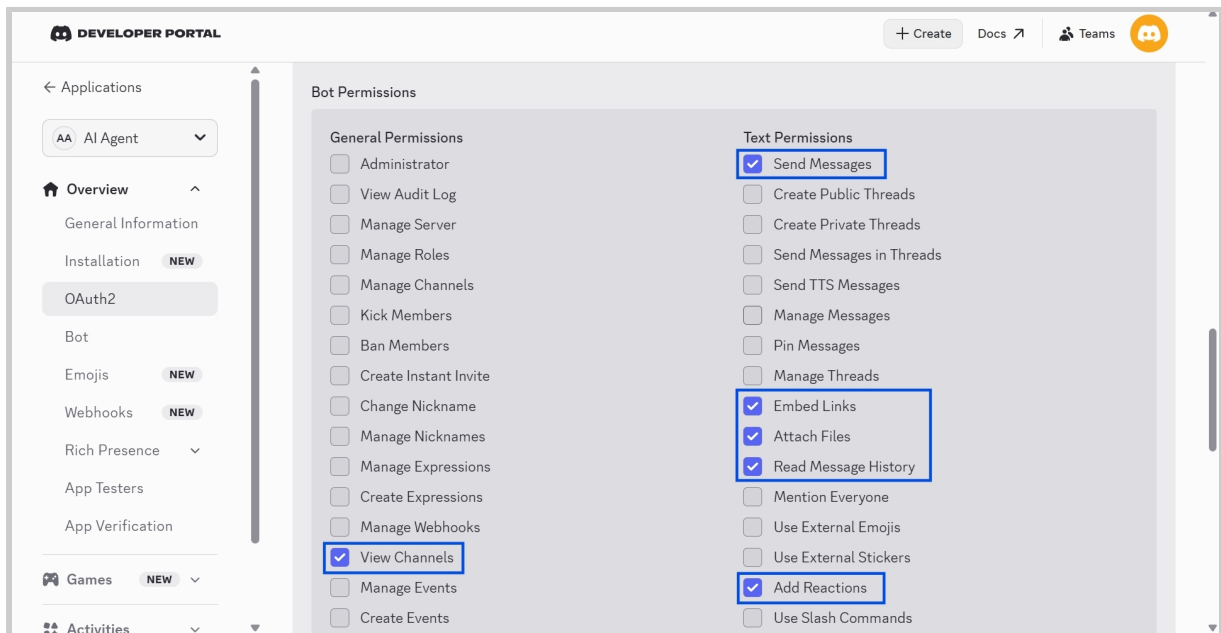
8. Select OAuth2 in the left Overview menu.

9. Enable the following 2 scopes:

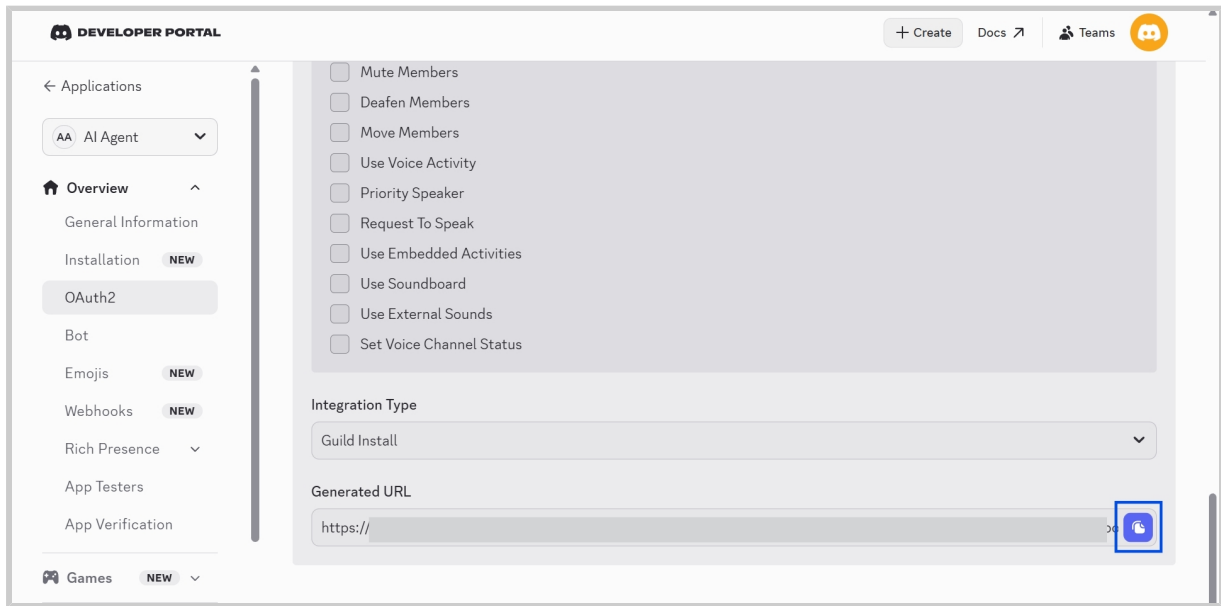
- bot
- application.commands



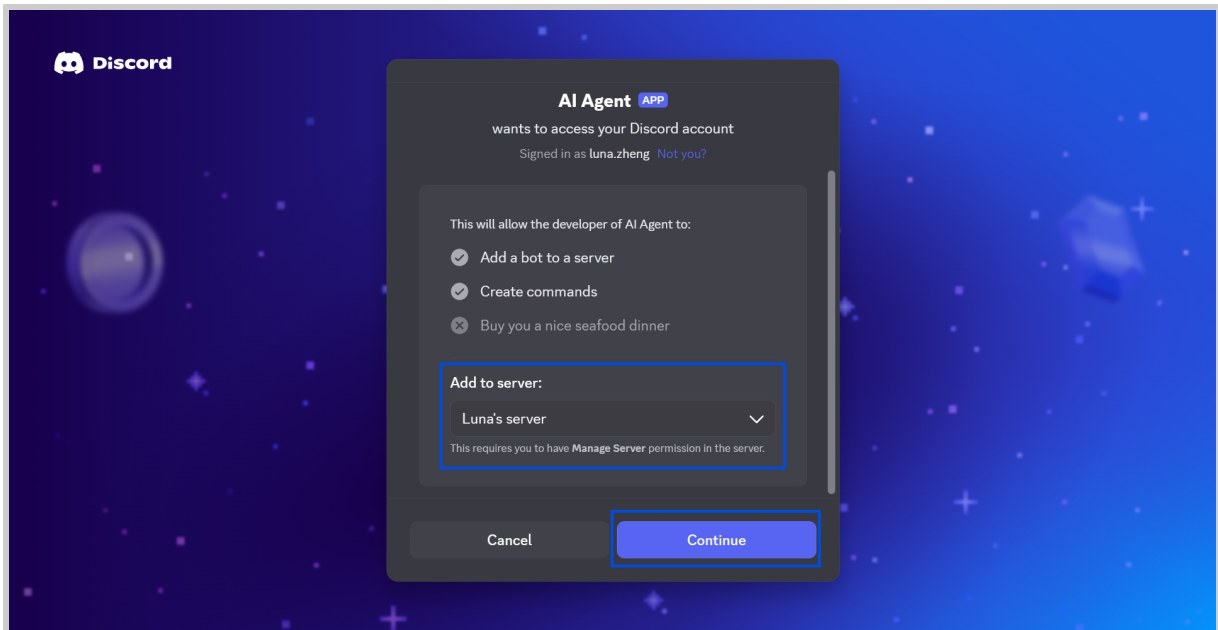
10. Enable the Bot Permissions as shown in the picture.



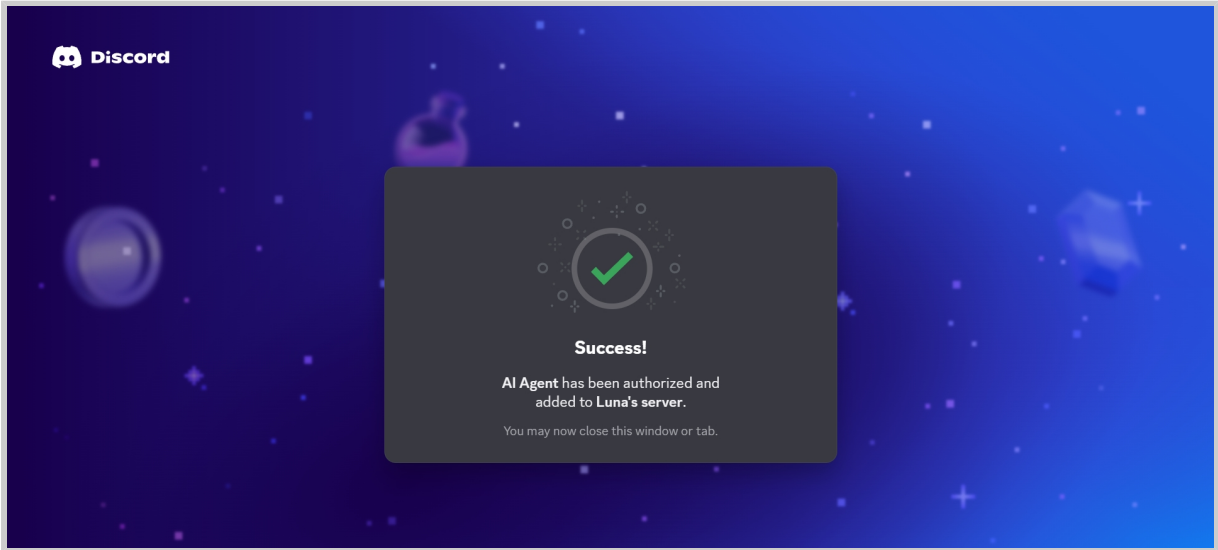
11. Scroll down to copy the URL and open it in a browser.



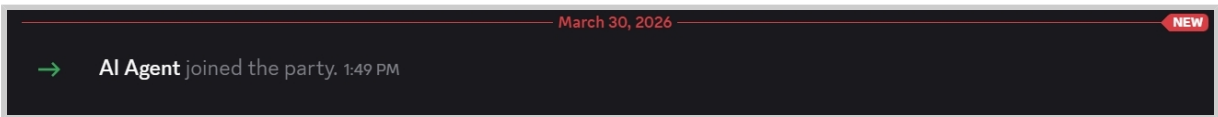
12. Select your server and click **Continue**.



13. Confirm the authorization, and the "Success" notification will display.

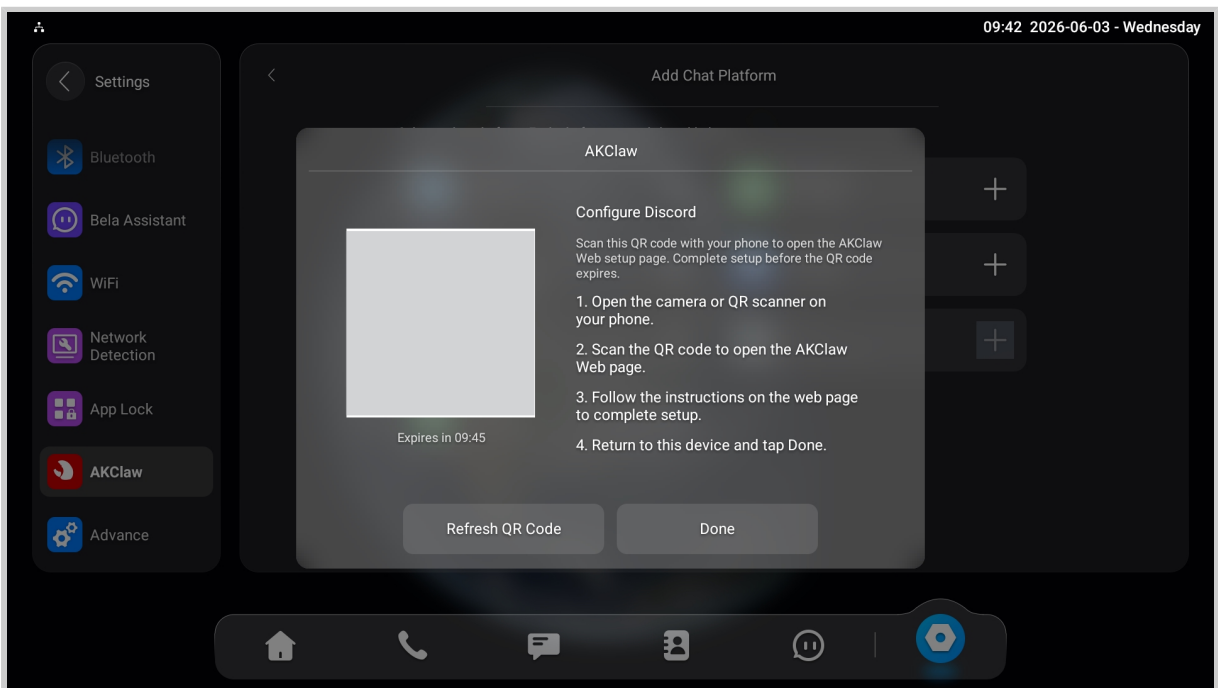


Then, the Bot will be added to your channel.

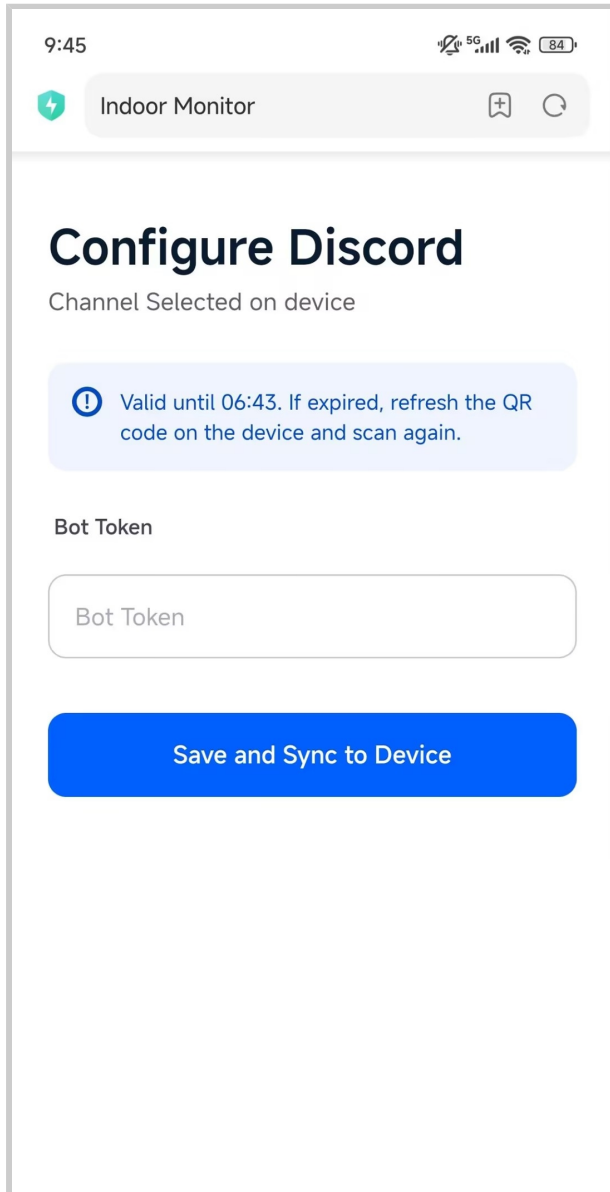


Configure Device Settings

1. Tap + next to Discord on the indoor monitor.
2. Scan the QR code with your phone to open the AKClaw Discord setup page.



3. Enter the **Bot Token** you copied in the [Generate Bot Token](#) step.
4. Tap **Save and Sync to Device**. “Config Submitted” will display on the indoor monitor.



Then, you can @the Bot in your Discord chat for a conversation, such as asking it to open the door, arm the device, turn up the speaker volume, and so on.

Troubleshooting

If the bot does not respond:

- Check the API key is correct.
- Check device internet connectivity.
- Check AKClaw service status is Running.
- Check bot permissions on Discord.
- Check that the bot is added to the correct channel.

Supported AI Agent Control Function

The AI agent supports natural language interaction. Users can speak naturally without using exact predefined commands.

| Category | Function | |
|-------------------|-----------------------|-------------------------------|
| Home Control | Door unlocking | |
| | Live monitoring | Open the monitor of FrontDoor |
| | Arm / Disarm security | Arm Home / Arm Away |
| | Sensor status check | Check door status |
| General Assistant | General questions | |
| | Translation | Translate Chinese to English |
| | Weather updates | How's the weather today? |
| | Writing assistance | Help me write an email |
| Device Settings | Volume adjustment | |
| | Brightness adjustment | Make it brighter |

| Category | Function | |
|-----------------|--------------------------|------------------------|
| | Language switching | Switch device language |
| User Management | Add administrators | |
| | Check administrator list | Show admin list |

| Example Command | Description |
|---|--|
| Unlock FrontDoor | Unlock connected doors by voice request. |
| View the live video feed from a door phone or linked entrance device. | |
| Enable or disable security modes such as Home Mode or Away Mode. | |
| Check the status of door/window sensors, motion detectors, and smoke sensors. | |
| What can you do? | Ask questions on common topics and receive AI responses. |
| Translate between supported languages. | |
| Request current weather information for selected locations. | |
| Generate drafts, summaries, or edited text content. | |

| Example Command | Description |
|-------------------------------------|---|
| Turn up the volume | Increase or decrease the device volume. |
| Adjust the screen brightness level. | |
| Change the device system language. | |
| Add an admin | Grant administrator permissions to trusted users. |
| View users with access permission. | |

Skills

Skills are functional execution modules that extend AKClaw's capabilities, enabling device control, smart home integration, monitoring, automation, and third-party service interactions.

Skill Categories

Built-in Skills (Ready to Use)

The following skills are available out of the box and can be used without additional third-party setup:

All skills prefixed with **openclaw-** (such as configuration, monitoring, sensor management, relay control, and administrator management).

Skills Requiring Additional Configuration

The following skills require external devices, services, or software before use:

| Skill | Requirement |
|-------------------|--|
| AI Alarm Push | AI alarm review and push notification configuration. |
| common-homekit | Apple Home setup and paired HomeKit devices. |
| sonoscli | Sonos speakers available on the same local network. |
| stock-monitor | Internet access for stock data retrieval. |
| google-calendar | Android CalendarBridge and Google Calendar account. |
| AKClaw-Smart-Home | Integration with akubela Smart Home devices and services. |
| openhue | OpenHue environment and Philips Hue devices. |
| notion | Notion API integration for creating and managing pages, databases, and blocks. |

Skill Enable/Disable Control

Some skills provide an independent toggle switch and can be enabled or disabled as needed, including:

- AKClaw-Smart-Home
- AI Alarm Push

Only enabled skills will be available for execution by AKClaw.

Security and Privacy Notes

- **WhatsApp bot account:** The account linked to AKClaw will process all incoming messages via the AI model. Avoid using a personal account with sensitive conversations.
- **Telegram Allow From:** Restrict access to trusted Telegram user IDs only to prevent unauthorized control of your device.
- **Discord bot permissions:** Grant only the permissions listed in this guide. Avoid enabling Administrator permissions.

Click this button for more resources



**Back to Global Visions
Akuvox Knowledge Base**

